

TEXSTORIES **BY EASTERN**



Collection
SPARTAN

SPARTAN

by TEXTSTORIES

A celebration of elegance in simplicity.

Spartan — a thoughtfully curated collection where fabric design embraces form, texture, and atmosphere. Every article is selected for its ability to convey quiet strength and material presence. Across dobby and jacquard weaves, satin finishes, embroidery, and print techniques, SPARTAN presents a spectrum of tactile expressions. From airy sheers to upholstery-grade constructions, the collection explores surface with intention: flowing geometrics, abstract motifs, and layered textures that evoke architecture, rhythm, and natural abstraction. Crafted in blends of natural and synthetic fibers, each fabric complements interiors defined by understated elegance and a palette of earthy and neutral tones. Spartan is more than a compilation of textiles — it's a design language of balance and clarity, made to bring structure, calm, and character to any space.



SPARTAN

TWINKLE	Page 3
AXIS	Page 4
VEIL	Page 5
BOTANICA	Page 7
CANVAS	Page 8
SPIRAL	Page 9
ZEBRA	Page 10
LUXE	Page 11
VISTA	Page 12
WAVE	Page 14
VALLEY	Page 15
EDEN	Page 16
OASIS	Page 17
CANYON	Page 18
SIERRA	Page 19
MAZE	Page 20
FUSION	Page 21
PANDA	Page 22
CANNES	Page 23
ALIGN	Page 24
DAZZLE	Page 25
DOODLE	Page 26
VERTEX	Page 27
BLOCKADE	Page 28
DELTA	Page 29
CAMPUR	Page 30
CHROMA	Page 31



TWINKLE

Threads of embroidery caught in the light of nature.

TWINKLE features a cotton, oxford-weave base enhanced with intricate embroidery. The golden matte surface adds rich texture, perfect for cushions or curtains. It's use of alluring Zari brings understated shimmer and organic refinement to interiors grounded in earthy, elemental aesthetics.

Keywords: Cotton, Oxford weave, embroidery, golden, zari, shimmer, cushions, curtains.

Article Reference	TWINKLE			
Color	SAHARA			
Width (+/-)	140 cms			
Repeat (+/-)	Vertical	2 cm	Horizontal	2 cm
Composition	55% Cotton, 29% Viscose, 7% Zari, 9% Polyester			
Weight (+/-)	395 g/m ²			
Abrasion Resistance	+15,000 Martindale			
Usage	Decorative			
Care Instructions	Dry Cleaning			



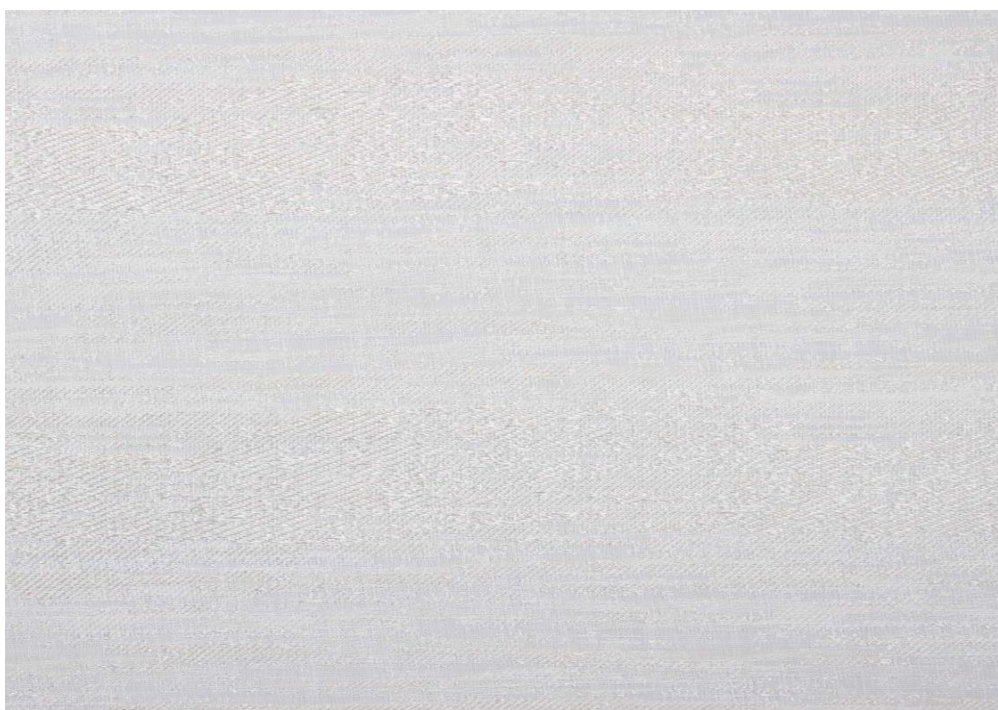
AXIS

Geometry of the earth in motion

AXIS is a 100% cotton jacquard fabric, showcasing bold geometric forms through cut-weft technique. This decorative fabric adds structure to curtains or cushions, lending quiet rhythm and form to interiors inspired by natural patterns and grounded simplicity.

Keywords: 100% cotton, jacquard fabric, bold, geometric, cut-weft, curtains, cushions.

Article Reference	AXIS			
Color	SAHARA			
Width (+/-)	140cms			
Repeat (+/-)	Vertical	7 cm	Horizontal	17.5 cm
Composition	100% Cotton			
Weight (+/-)	285 g/m ²			
Abrasion Resistance	+25,000 Martindale			
Usage	Decorative			
Care Instructions	Dry Cleaning			



VEIL

Breezes caught in nature's murmur

VEIL is a sheer fabric woven in an abstract jacquard pattern, with a layered look created using contrasting dull and bright yarns. Lightweight and light-filtering, it's ideal for breezy panels or translucent drapery. The delicate pattern creates subtle motion, perfect for interiors that seek softness rooted in earthy elegance.

Keywords: Sheer, abstract pattern, jacquard, lightweight, light-filtering, breezy.

Article Reference	VEIL			
Colors	SAHARA, FOG			
Width (+/-)	290 cms			
Repeat (+/-)	Vertical	17.5 cm	Horizontal	19 cm
Composition	100% Polyester			
Weight (+/-)	160 g/m ²			
Abrasion Resistance	N/A			
Usage	Drapery			
Care Instructions	Dry Cleaning			

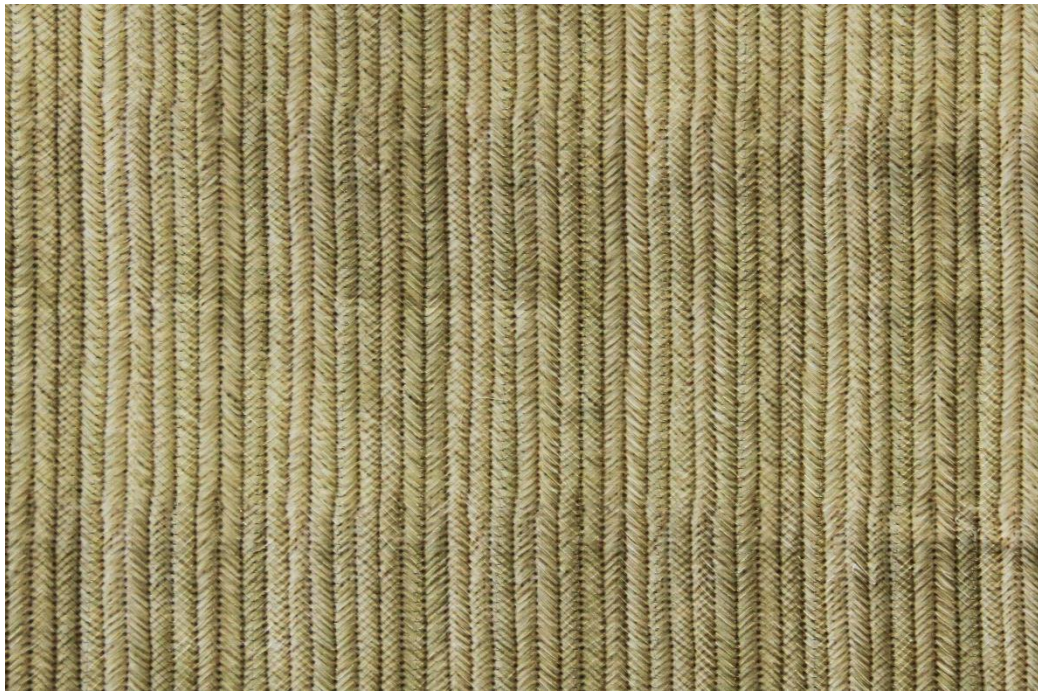
VEIL



SAHARA



FOG



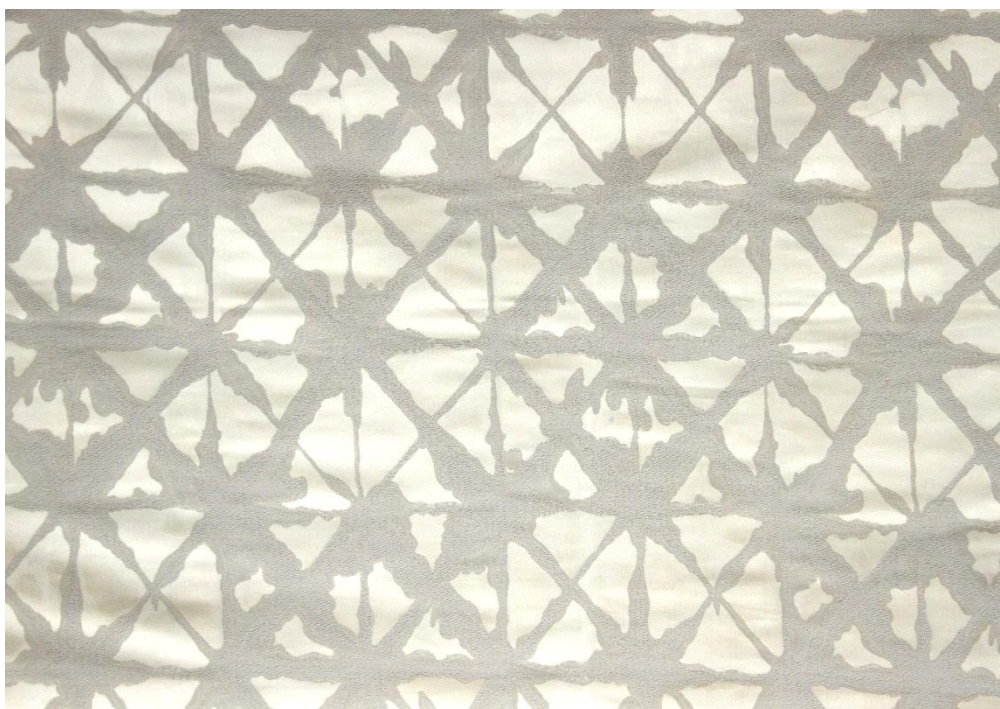
BOTANICA

Layered like the land, crafted like the hand

BOTANICA blends dobby weaving with print and embroidery to form layered, flowing textures. The undulating pattern mimics organic strata, making it perfect for decorative cushions or panels. It enriches interiors with handcrafted character and nature-inspired warmth.

Keywords: Dobby, print, embroidery, layered, undulating pattern, organic strata.

Article Reference	BOTANICA			
Color	SAHARA			
Width (+/-)	140 cms			
Repeat (+/-)	Vertical	N/A	Horizontal	3.5 cm
Composition	94% Polyester, 6% Zari			
Weight (+/-)	300 g/m ²			
Abrasion Resistance	+10,000 Martindale			
Usage	Decorative			
Care Instructions	Dry Cleaning			



CANVAS

Stars etched in satin and shadow

CANVAS is a piece-dyed, monochrome jacquard textile enhanced with satin accents. Its irregular, asymmetric star motifs shimmer subtly across the surface. Ideal for elegant cushions or drapery, CANVAS introduces celestial geometry to earthy, serene design schemes.

Keywords: Piece-dyed, monochrome, jacquard, satin accents, asymmetric star, drapery.

Article Reference	CANVAS			
Color	SAHARA			
Width (+/-)	140 cms			
Repeat (+/-)	Vertical	40 cm	Horizontal	34 cm
Composition	25% Nylon, 29% Linen, 46% Viscose			
Weight (+/-)	325 g/m ²			
Abrasion Resistance	+30,000 Martindale			
Usage	Decorative, Upholstery			
Care Instructions	Dry Cleaning			



SPIRAL

A rustic grace in every stitch

SPIRAL is a dobby-woven fabric composed of a polyester-linen blend, softened through fabric washing. Designed for decorative applications like curtains and cushions, it features embroidered ogee shapes elegantly connected by dotted lines. The pattern adds a refined, heritage-inspired softness that brings timeless geometry into warm, grounded interiors

Keywords: Dobby, poly-linen blend, decorative, ogee shapes, dotted lines, heritage.

Article Reference	SPIRAL			
Color	SAHARA			
Width (+/-)	140 cms			
Repeat (+/-)	Vertical	19.75 cm	Horizontal	10.5 cm
Composition	92% Polyester, 8% Linen			
Weight (+/-)	435 g/m ²			
Abrasion Resistance	+25,000 Martindale			
Usage	Decorative			
Care Instructions	Dry Cleaning			



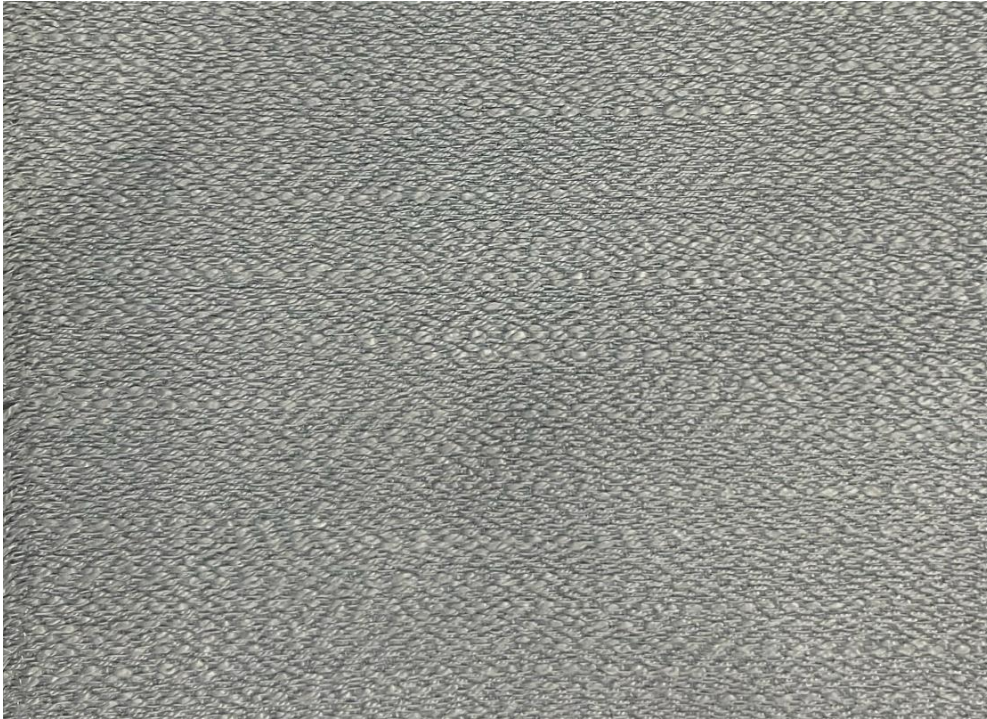
ZEBRA

Pattern and pause in perfect accord.

ZEBRA is a durable jacquard woven from a cotton-viscose-nylon blend, designed for both heavy domestic use and decorative settings. Its yarn-dyed floating stripes form a soft geometric grid with subtle movement. Ideal for upholstery, cushions, or structured drapery, it lends quiet rhythm to interiors rooted in natural balance.

Keywords: Jacquard, durable, cotton-viscose-nylon, heavy domestic use, yarn-dyed, stripes

Article Reference	ZEBRA			
Color	FOG			
Width (+/-)	140 cms			
Repeat (+/-)	Vertical	32.5 cm	Horizontal	35 cm
Composition	15% Nylon, 54% Cotton, 31% Viscose			
Weight (+/-)	500 g/m ²			
Abrasion Resistance	+60,000 Martindale			
Usage	Decorative, Upholstery			
Care Instructions	Dry Cleaning			



LUXE

A soft sculpture for living spaces

LUXE is a performance-grade jacquard in piece-dyed polyester, built for heavy domestic use with a highly textured, layered surface. Its abstract pattern mimics natural stone, offering both visual depth and tactile interest. Perfect for upholstery in earthy interiors seeking sculptural softness and rugged refinement.

Keywords: Performance-grade, polyester, textured, natural stone, upholstery.

Article Reference	LUXE			
Color	FOG			
Width (+/-)	140 cms			
Repeat (+/-)	Vertical	N/A cm	Horizontal	N/A
Composition	100% Polyester			
Weight (+/-)	410 g/m ²			
Abrasion Resistance	+30,000 Martindale			
Usage	Decorative, Upholstery			
Care Instructions	Dry Cleaning			



VISTA

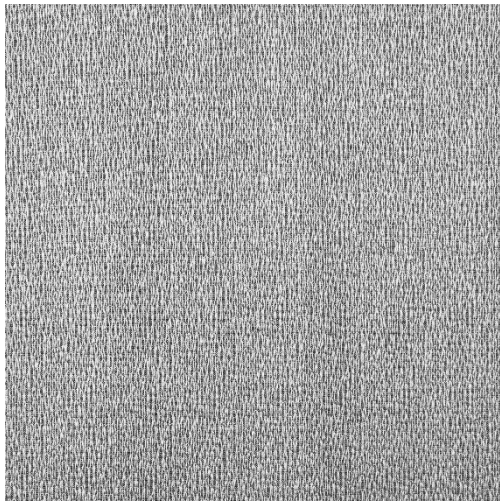
A soft drift of texture and glow

VISTA is a sheer jacquard crafted in yarn-dyed polyester, designed to softly filter light through a netted, semi-transparent construction. Its open weave introduces quiet texture to windows and partitions. Ideal for layered panels or breezy curtains, TERESA brings a touch of airiness to calm, earth-toned interiors.

Keywords: Sheer, jacquard, yarn-dyed, semi-transparent, open weave, breezy curtains.

Article Reference	VISTA			
Colors	FOG, SANDY, PIANO			
AWidth (+/-)	290 cms↑			
Repeat (+/-)	Vertical	3.75 cm	Horizontal	4.5 cm
Composition	100% Polyester			
Weight (+/-)	190 g/m ²			
Abrasion Resistance	N/A			
Usage	Drapery			
Care Instructions	Dry Cleaning			

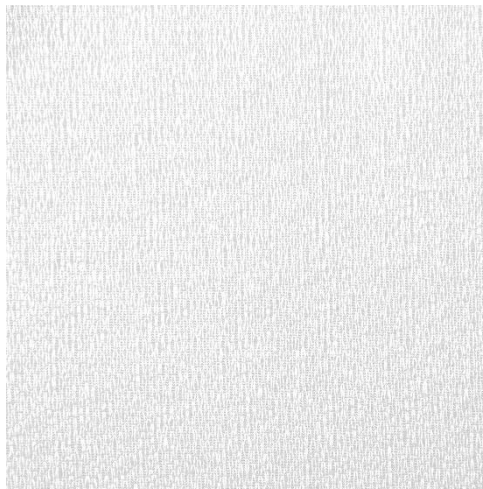
VISTA



FOG



SANDY



PIANO



WAVE

Textures that echo the terrains

WAVE combines satin and plain jacquard weaves in a refined large-scale diamond layout. This decorative fabric's pattern evokes soft terrain shifts, making it an excellent choice for drapery or cushions in nature-inspired interiors that celebrate layered textures and quiet movement.

Keywords: Satin, jacquard, plain weave, large-scale, soft terrain, drapery, cushions.

Article Reference	WAVE			
Color	FOG			
Width (+/-)	140 cms			
Repeat (+/-)	Vertical	60 cm	Horizontal	69.5 cm
Composition	36% Nylon, 12% Linen, 52% Viscose			
Weight (+/-)	225 g/m ²			
Abrasion Resistance	+60,000 Martindale			
Usage	Decorative			
Care Instructions	Dry Cleaning			



VALLEY

A soft reflection of timeworn wood

VALLEY is a jacquard fabric woven with a blend of yarn-dyed polyester and zari, creating a surface that shimmers subtly. Its abstract stripe design resembles weathered bark, making it ideal for curtains or cushions. VALLEY enriches earthy interiors with a sense of natural erosion and quiet luxury.

Keywords: Jacquard, yarn-dyed, polyester, zari, shimmer, abstract, stripe, weathered bark.

Article Reference	VALLEY			
Color	FOG			
Width (+/-)	140 cms			
Repeat (+/-)	Vertical	36.5 cm	Horizontal	36 cm
Composition	86% Polyester, 14% Zari			
Weight (+/-)	204 g/m ²			
Abrasion Resistance	N/A			
Usage	Decorative			
Care Instructions	Dry Cleaning			



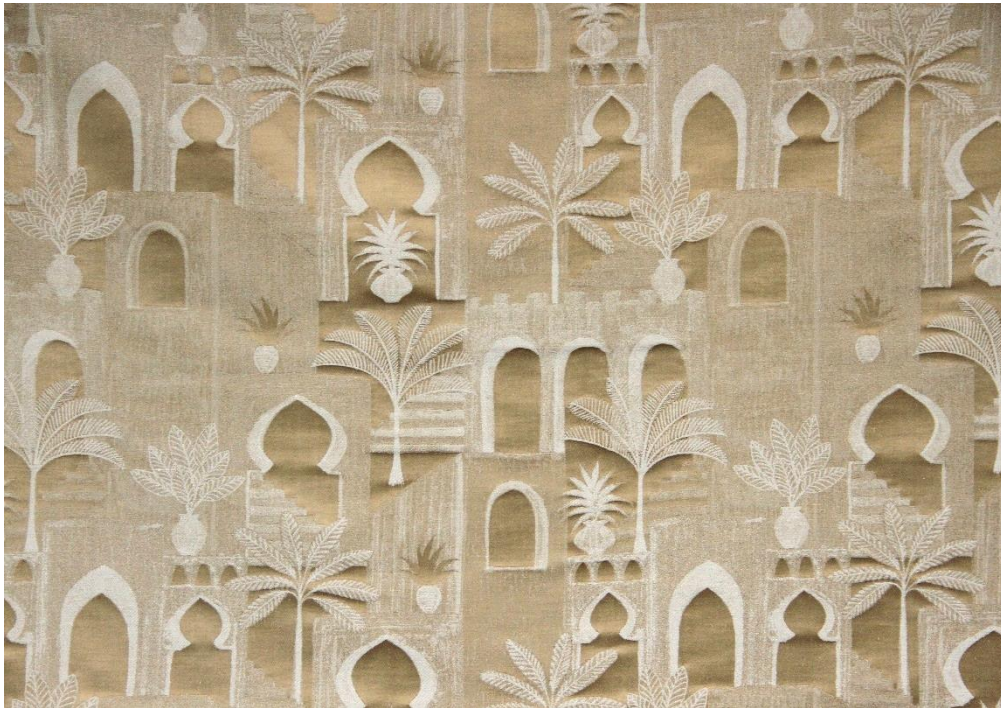
EDEN

Layered lines inspired by elemental rhythm

EDEN is a decorative jacquard combining yarn and piece-dyeing across a nylon, polyester, and linen blend. Its surface is defined by geometric lines crafted with special yarns that create visual layering. A perfect fit for refined cushions or drapes in interiors celebrating balance, precision, and natural tones.

Keywords: Jacquard, yarn dyeing, piece- dyeing, nylon-poly-linen blend, geometric lines, decorative.

Article Reference	EDEN			
Color	SANDY			
Width (+/-)	140 cms			
Repeat (+/-)	Vertical	69 cm	Horizontal	69.5 cm
Composition	27% Nylon, 44% Polyester, 9% Linen, 20% Viscose			
Weight (+/-)	300 g/m ²			
Abrasion Resistance	+40,000 Martindale			
Usage	Decorative			
Care Instructions	Dry Cleaning			



OASIS

Lines and light of desert arches

OASIS is a jacquard fabric that features a mural-like composition of structured motifs. Its subtle grid feels familiar and comforting, ideal for cushions or decorative panels. With a pattern that suggests framed artistry, OASIS anchors natural interiors with warmth and grace.

Keywords: Jacquard, mural-like, structured, decorative, cushions, framed artistry, desert.

Article Reference	OASIS			
Color	SANDY			
Width (+/-)	140 cms			
Repeat (+/-)	Vertical	30 cm	Horizontal	35 cm
Composition	36% Nylon, 52% Viscose, 12% Linen			
Weight (+/-)	225 g/m ²			
Abrasion Resistance	+15,000 Martindale			
Usage	Decorative			
Care Instructions	Dry Cleaning			



CANYON

The bold movement of rolling hills

CANYON is a cotton-polyester jacquard, designed for decorative and general domestic use. Its dynamic pattern of zigzags and curving geometries mimics the contours of rugged hills. Ideal for cushions, light upholstery, or drapery in rustic interiors seeking bold organic movement.

Keywords: Cotton-polyester, jacquard, decorative, zigzag, curving geometry, rugged hills.

Article Reference	CANYON			
Color	SANDY			
Width (+/-)	140 cms			
Repeat (+/-)	Vertical	23.5 cm	Horizontal	34.5 cm
Composition	31% Cotton, 69% Polyester			
Weight (+/-)	570 g/m ²			
Abrasion Resistance	+20,000 Martindale			
Usage	Decorative			
Care Instructions	Dry Cleaning			



SIERRA

The artful dance of woven currents

SIERRA features intricate embroidery on a dobby-woven fabric in a polyester-cotton blend, adding rich texture and artistic detail to its design. The surface ripples with zigzag lines that flow like gentle water currents. Ideal for curtains or cushions, SIERRA lends a handcrafted, fluid motion to interiors inspired by earthy calm and movement.

Keywords: Embroidery, dobby, polyester- cotton, ripples, zig-zag lines, water currents, fluid.

Article Reference	SIERRA			
Color	SANDY			
Width (+/-)	140 cms			
Repeat (+/-)	Vertical	9.5 cm	Horizontal	12.5 cm
Composition	57% Cotton, 43% Polyester			
Weight (+/-)	395 g/m ²			
Abrasion Resistance	+55,000 Martindale			
Usage	Decorative			
Care Instructions	Dry Cleaning			



MAZE

The song of fields in flowy Lines

MAZE is a jacquard woven with yarn-dyed threads in a cotton-polyester blend, designed to bring decorative elegance to interiors. Its abstract pattern, resembling the intricate lines of fields viewed from above, flows like calligraphic strokes creating a sense of dynamic movement. Ideal for cushions or soft accents, MAZE infuses spaces with the beauty of natural geometry and the fluidity of open landscapes.

Keywords: Jacquard, yarn-dyed, cotton- polyester, abstract, fields, calligraphic strokes, soft accents, cushions.

Article Reference	MAZE			
Color	SANDY			
Width (+/-)	140 cms			
Repeat (+/-)	Vertical	45.5 cm	Horizontal	35 cm
Composition	22% Polyester, 78% Cotton			
Weight (+/-)	555 g/m ²			
Abrasion Resistance	+10,000 Martindale			
Usage	Decorative			
Care Instructions	Dry Cleaning			



FUSION

Calming rhythm of organic curves

Fusion is a jacquard textile with a satin base, crafted from a complex yarn- and piece-dyed fiber blend for strength and beauty. The fabric's curving botanical pattern delivers elegance and calm. Suitable for upholstery or decorative pieces, it layers softness into interiors echoing natural growth and serenity.

Keywords: Jacquard, satin, complex, yarn and piece dyed, botanical pattern, upholstery, decorative.

Article Reference	FUSION			
Color	MONO			
Width (+/-)	140 cms			
Repeat (+/-)	Vertical	78 cm	Horizontal	69.5 cm
Composition	22% Nylon, 48% Cotton, 30% Viscose			
Weight (+/-)	370 g/m ²			
Abrasion Resistance	+30,000 Martindale			
Usage	Decorative, Upholstery			
Care Instructions	Dry Cleaning			



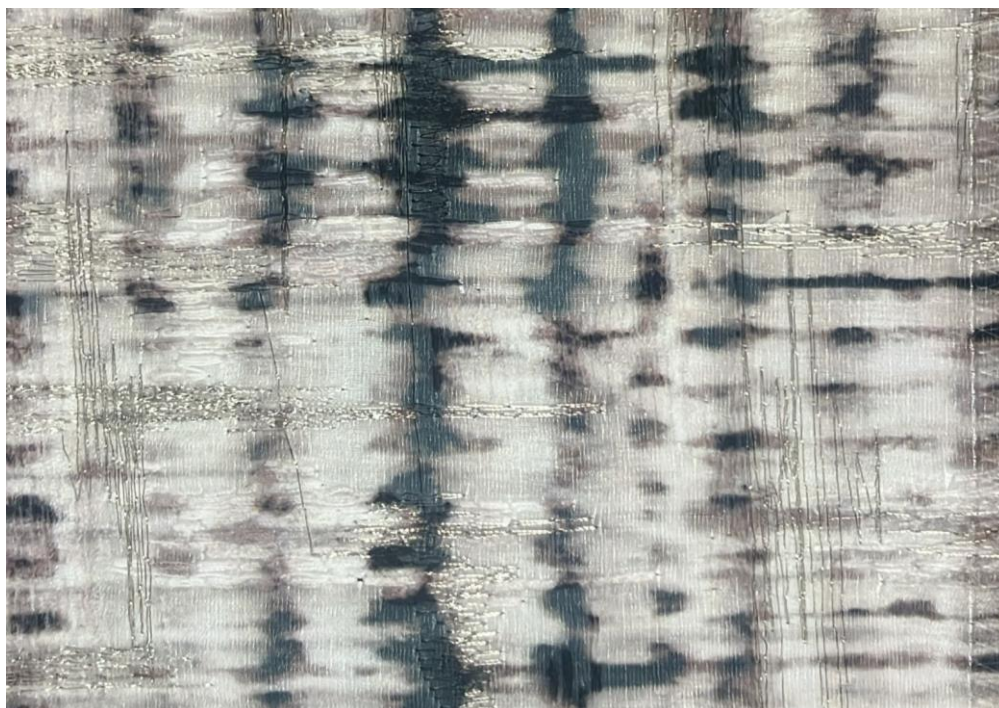
PANDA

Natural comfort translated in soft tie dye look.

PANDA is a 100% cotton jacquard that uses yarn-dyed slubbed yarns to form a soft tie-dye illusion across the surface. With a breathable hand and relaxed pattern, it's well suited for cushions, panels or soft furnishings. Its handcrafted look complements interior palettes grounded in tradition and comfort.

Keywords: 100% Cotton, jacquard, slub yarn, soft tie -dye effect, breathable, relaxed.

Article Reference	PANDA			
Color	MONO			
Width (+/-)	140 cms			
Repeat (+/-)	Vertical	< 1 cm	Horizontal	< 1 cm
Composition	100% Cotton			
Weight (+/-)	335 g/m ²			
Abrasion Resistance	+10,000 Martindale			
Usage	Decorative			
Care Instructions	Dry Cleaning			



CANNES

Japanese inspiration rendered in satin

CANNES features a satin dobby weave enriched with printed motifs inspired by Japanese shibori, layered with delicate embroidery. Crafted from a blend of natural and synthetic fibers, it's ideal for decorative applications like drapery or cushions. The pattern adds quiet artistry to interiors drawn to earthy refinement.

Keywords: Satin, dobby, printed, Shibori, embroidery, blend, decorative.

Article Reference	CANNES			
Color	MONO			
Width (+/-)	140 cms			
Repeat (+/-)	Vertical	15 cm	Horizontal	33 cm
Composition	93% Polyester, 7% Zari			
Weight (+/-)	325 g/m ²			
Abrasion Resistance	+10,000 Martindale			
Usage	Decorative			
Care Instructions	Dry Cleaning			



ALIGN

The gentle movement of woven stripes

ALIGN is a 100% cotton dobby fabric with a matte base contrasted by soft, floating stripes across the surface. Designed for decorative use in cushions and curtains, its subtle motion suits interior spaces that embrace calm geometry and earthy softness.

Keywords: 100% Cotton, matte base, floating stripes, decorative, geometry.

Article Reference	ALIGN			
Color	MONO			
Width (+/-)	140 cms			
Repeat (+/-)	Vertical	N/A	Horizontal	9.5 cm
Composition	100% Cotton			
Weight (+/-)	445 g/m ²			
Abrasion Resistance	+10,000 Martindale			
Usage	Decorative			
Care Instructions	Dry Cleaning			



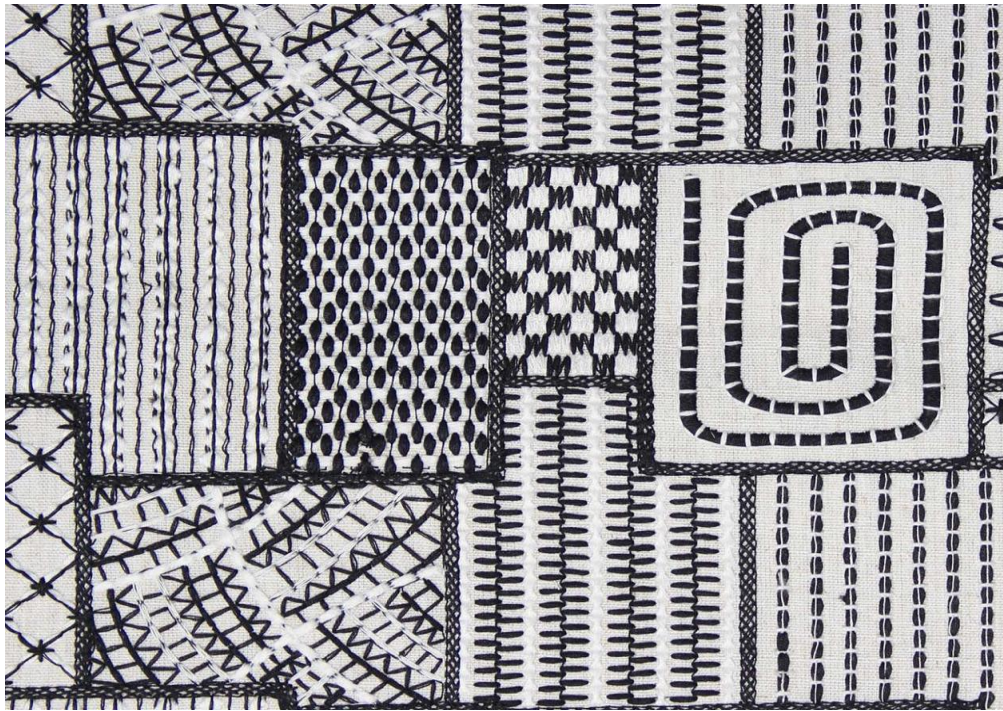
DAZZLE

Refined rhythm of classic diamonds

DAZZLE is a poly-cotton jacquard fabric designed for decorative applications such as cushions or soft furnishings. Its repeating diamond motifs add a refined geometric rhythm. The pattern brings a touch of classic elegance to interiors grounded in neutral, earthy palettes.

Keywords: Poly-cotton, jacquard, cushions, diamond, rhythm, grounded.

Article Reference	DAZZLE			
Color	MONO			
Width (+/-)	140 cms			
Repeat (+/-)	Vertical	16 cm	Horizontal	9 cm
Composition	27% Cotton, 73% Polyester			
Weight (+/-)	430 g/m ²			
Abrasion Resistance	+15,000 Martindale			
Usage	Decorative			
Care Instructions	Dry Cleaning			



DOODLE

Echoes of monochrome folk stories

DOODLE features a monochrome folk embroidery on a dobby-woven base made from a polyester-cotton blend, softened through fabric washing. Suitable for drapery, panels, or cushions, the fabric's pattern evokes cultural roots and quiet storytelling—perfect for rustic or globally inspired spaces with an earthy tone.

Keywords: Monochrome, folk-stories, embroidery, dobby base, blend, drapery, panels, cushions.

Article Reference	DOODLE			
Color	MONO			
Width (+/-)	140 cms			
Repeat (+/-)	Vertical	18.5 cm	Horizontal	32 cm
Composition	94% Polyester, 6% Linen			
Weight (+/-)	655 g/m ²			
Abrasion Resistance	+25,000 Martindale			
Usage	Decorative			
Care Instructions	Dry Cleaning			



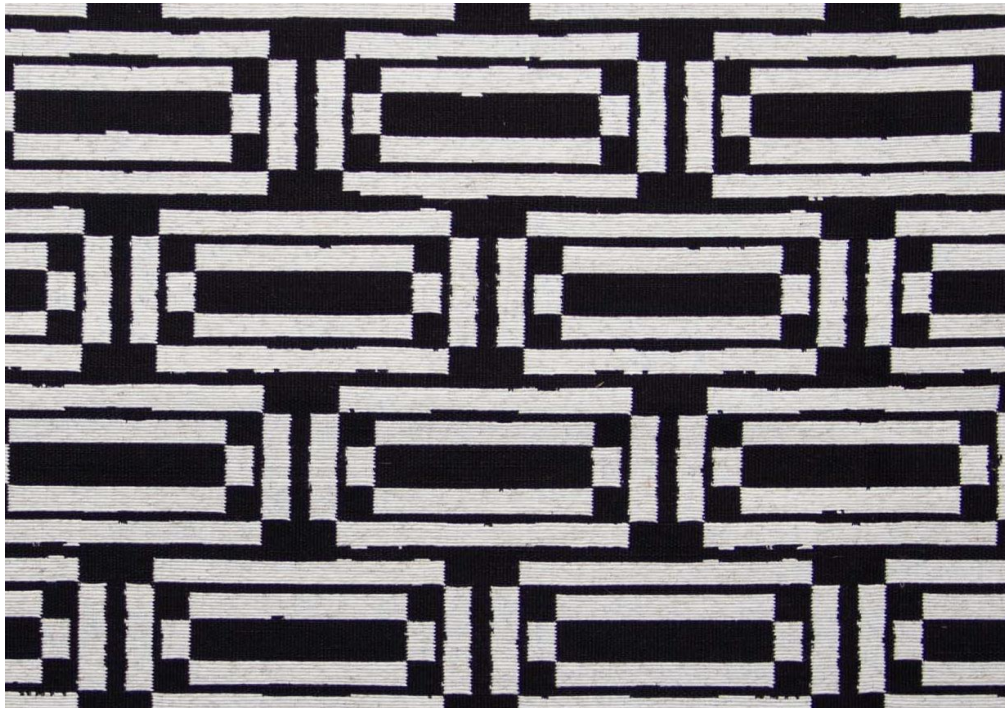
VERTEX

Bold geometry for grounded interiors

VERTEX is a heavy-duty jacquard woven with yarn-dyed threads in a polyester-linen blend. Designed for structured upholstery and decorative use, it features bold geometric motifs that lend form and clarity. The pattern supports interiors that value tactile structure within a natural, grounded design palette.

Keywords: Heavy duty, Jacquard, yarn-dyed, poly-linen blend, structured, upholstery, bold, geometric, form, clarity.

Article Reference	VERTEX			
Color	PIANO			
Width (+/-)	140 cms			
Repeat (+/-)	Vertical	4.5 cm	Horizontal	2.75 cm
Composition	95% Polyester, 5% Linen			
Weight (+/-)	420 g/m ²			
Abrasion Resistance	+55,000 Martindale			
Usage	Decorative, Upholstery			
Care Instructions	Dry Cleaning			



BLOCKADE

Organic Restraint in Double-Cloth Weave

BLOCKADE is a double-cloth jacquard composed of polyester, cotton, and linen, made for durability in upholstery and decorative settings. Its tactile grid structure brings depth and balance to surfaces. With its grounding geometry, BLOCKADE supports interiors that embrace structure and organic restraint in equal measure.

Keywords: Double-cloth, jacquard, polyester, cotton, linen, durability, upholstery, decorative, tactile, grid.

Article Reference	BLOCKADE			
Color	PIANO			
Width (+/-)	140 cms			
Repeat (+/-)	Vertical	12.5 cm	Horizontal	11.5 cm
Composition	58% Polyester, 38% Cotton, 4% Linen			
Weight (+/-)	520 g/m ²			
Abrasion Resistance	+30,000 Martindale			
Usage	Decorative, Upholstery			
Care Instructions	Dry Cleaning			



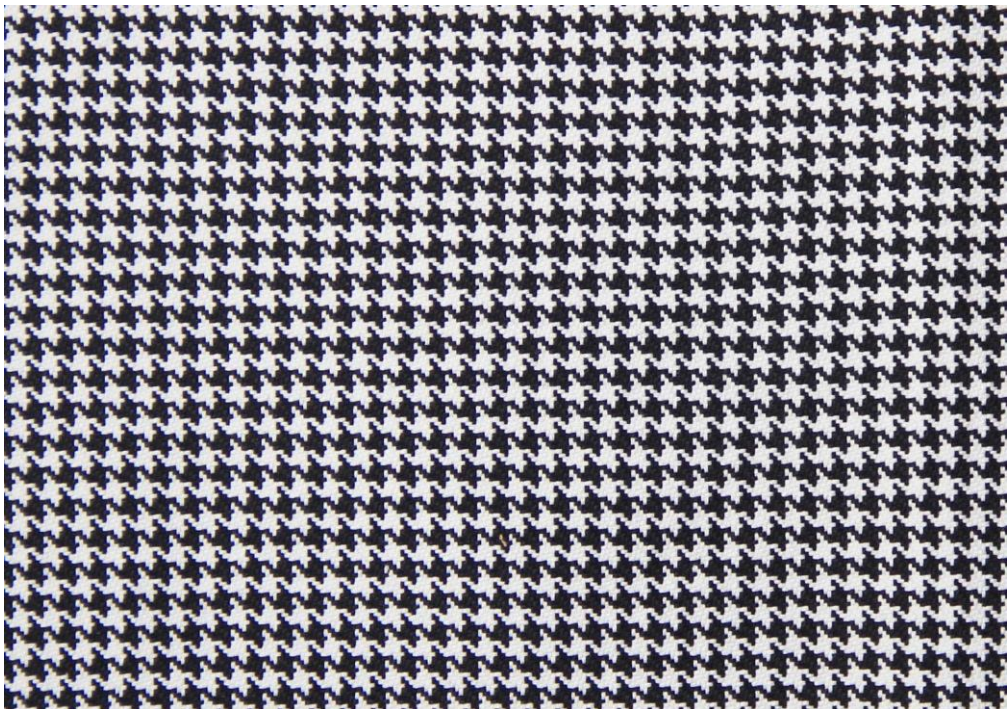
DELTA

Waves in bold contrast

DELTA is a yarn-dyed jacquard woven from a polyester-cotton-linen mix. Designed for decorative use in drapery or cushions, its soft, pagoda-like waves create a peaceful rhythm. The pattern enhances interiors seeking quiet curvature and a touch of botanical softness within an earthy design scheme.

Keywords: Yarn-dyed, jacquard, polyester-cotton-linen, decorative, pagoda- like, waves.

Article Reference	DELTA			
Color	PIANO			
Width (+/-)	140 cms			
Repeat (+/-)	Vertical	2 cm	Horizontal	2 cm
Composition	48% Polyester, 47% Cotton, 5% Linen			
Weight (+/-)	450 g/m ²			
Abrasion Resistance	+15,000 Martindale			
Usage	Decorative			
Care Instructions	Dry Cleaning			



CAMPUR

Earthy Houndstooth in Cotton Weaves

CAMPUR is a cotton jacquard featuring a reimagined houndstooth pattern with a softened, organic twist. Its natural composition and durable weave make it ideal for upholstery or structured cushions. This classic pattern grounds interiors with a refined, earthy presence.

Keywords: Cotton, jacquard, houndstooth, organic, natural composition, durable, upholstery, cushions.

Article Reference	CAMPUR			
Color	PIANO			
Width (+/–)	140 cms			
Repeat (+/–)	Vertical	< 1 cm	Horizontal	< 1 cm
Composition	100% Cotton			
Weight (+/–)	400 g/m ²			
Abrasion Resistance	+60,000 Martindale			
Usage	Decorative, Upholstery			
Care Instructions	Dry Cleaning			



CHROMA

Calm Geometry in Balanced Weaves

CHROMA is a jacquard fabric woven in a balanced, symmetrical design using yarn-dyed threads. Its calm geometry suits decorative applications like cushions or drapery. With its orderly rhythm, CHROMA anchors interiors in serene, earth-toned symmetry.

Keywords: Jacquard, balanced, symmetrical, yarn-dyed, geometry, decorative.

Article Reference	CHROMA			
Color	PIANO			
Width (+/-)	140 cms			
Repeat (+/-)	Vertical	7.5 cm	Horizontal	3.5 cm
Composition	67% Polyester, 33% Cotton			
Weight (+/-)	580 g/m ²			
Abrasion Resistance	+25,000 Martindale			
Usage	Decorative			
Care Instructions	Dry Cleaning			



For Enquiries:

sales@easternsilk.com

sales@textstories.com